

PLAY THE POWER GAME *WITH **BOLT***



BOLT
BOLT
BOLT
BOLT



PLAY TO LEVEL UP YOUR BUSINESS

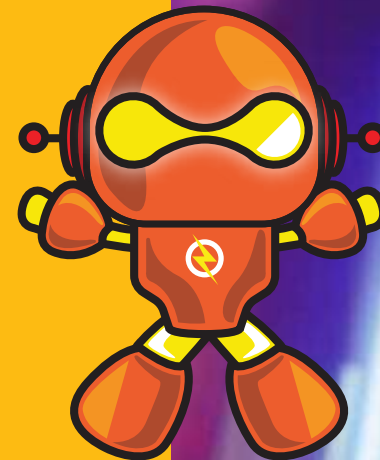
Embark on a journey where imagination knows no bounds. Welcome to Bolt, the ultimate playground for not just gamers, but thrill-seekers, creatives, and entrepreneurs alike. Bolt is more than a gaming zone; it's a ticket to leveling up your business. Crafted for the restless, designed for the fearless—Bolt is the arena where you don't just play games, you play for keeps.



PLAY BEYOND BOUNDARIES

Escape the ordinary and step into the extraordinary with Bolt. It's not just a gaming zone; it's a universe of endless possibilities. From the electrifying arenas of esports to the mesmerizing worlds of virtual reality, Bolt is a multi-verse of high-octane experiences. This is where innovation and imagination break free from the screen and come to life around you.

It is the epicentre of inclusive fun, a place where everyone can find their tribe, regardless of their age or gaming proficiency. It offers a universally engaging lifestyle, an experience that knows no age boundaries. Each visit to Bolt is a unique thrill, a moment in time that no one will want to miss.



EXPLORE
DISCOVER
EXPERIENCE
BOLDLY

LEAD
LEAD
LEAD
LEAD



PLAY AHEAD OF THE CURVE

The gaming and entertainment sector is a booming industry with unparalleled growth prospects. Virtual reality, augmented experiences, and eSports are not just buzzwords; they're the future. As digital entertainment becomes increasingly integrated into daily life, the demand for immersive and varied experiences is skyrocketing. By investing in Bolt, you can position yourself at the intersection of technology and entertainment, in a market that shows no signs of slowing down.



PLAY THE LONG GAME

Bolt is a brand that embodies innovation, excitement, and inclusivity. We're not just about games; we create experiences that withstand the test of time. Now, the Bolt is taking this ethos and expanding it to new cities and complexes. As an investor, this offers you a dynamic opportunity.

Invest in cutting-edge technology and customer loyalty. It's not just an investment for today; it's a strategic move for the future in an industry that's poised for exponential growth.



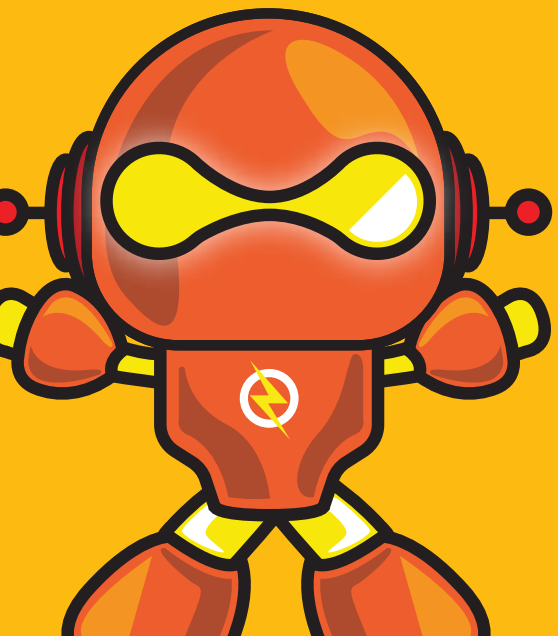
PLAY IN A WORLD OF YOUR OWN

Walk into Bolt and you'll instantly notice it's not just another gaming arcade—it's an arena of sensory experiences. Designed with meticulous attention to the ambiance, each zone within Bolt is a world unto itself, offering a unique blend of visual spectacle and acoustic finesse.

Imagine entering a space where every corner is thoughtfully designed, from pulsating lights that sync with the gaming action to soundscapes that immerse you in each adventure. That's Bolt. By investing in a Bolt, you can bring this transcendent atmosphere to a diverse audience, turning ordinary outings into extraordinary memories.



PLAY IN A UNIVERSE OF CHOICES



ARCADE GAMES





VR PLANE



4-PERSON CINEMA



BUMPER CAR





REASONS TO INVEST

CUTTING-EDGE TECHNOLOGY

Stay ahead with state-of-the-art gaming experiences

DIVERSE OFFERINGS

Something for everyone, ensuring a broad customer base

STRONG BRAND EQUITY

Bolt is a name that people know and trust

MARKETING MUSCLE

Leverage Bolt's established marketing channels and strategies

PROFITABLE MODEL

Designed for high returns and long-term business growth

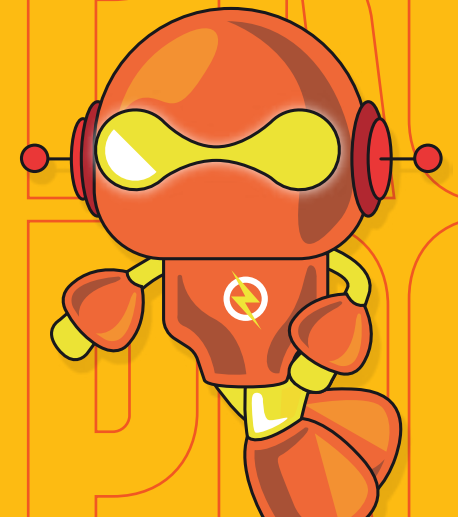


PR
DR
DR
DR
DR

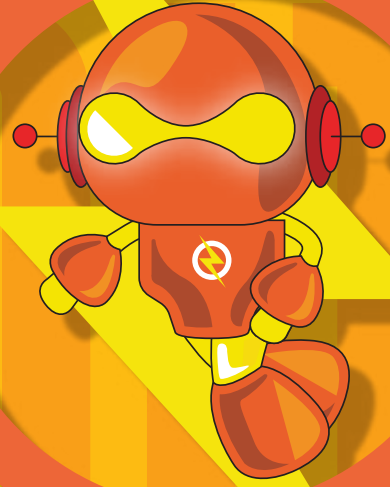


PLAY TO PROFIT

Investing in Bolt represents a strategic move within the thriving gaming and entertainment sector. Supported by a robust revenue model and unmatched brand recognition, your investment presents a prospect for consistent profitability. Beyond merely entering the gaming arena, this stands as a deliberate financial choice crafted for enduring growth and substantial returns on investment.



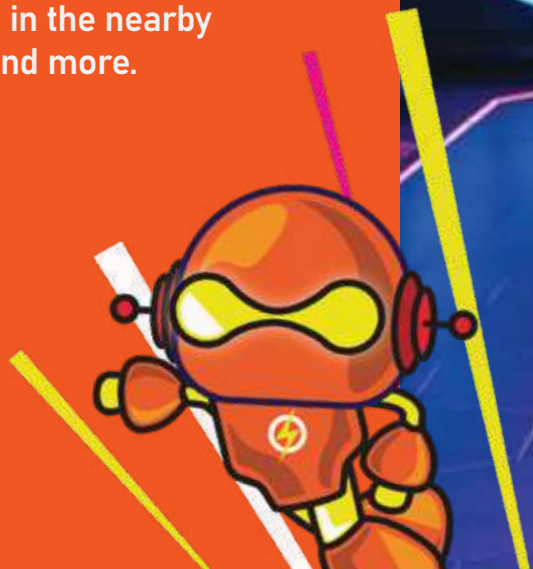
BOLT










PLAY WHERE IT COUNTS

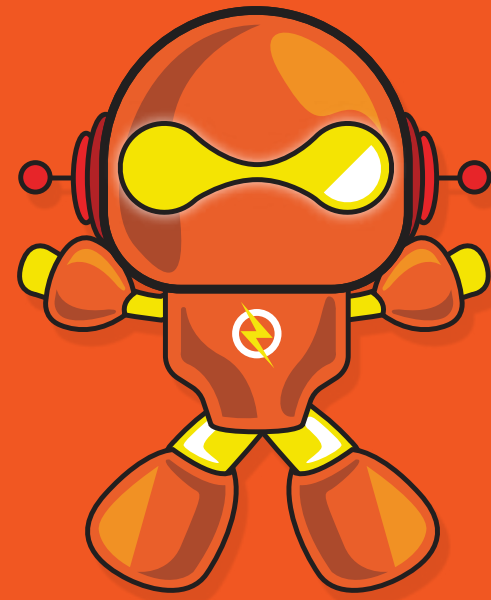
As a part of Technopark , BOLT is at a prime Location in Noida. Located on Signal free corridor on the expressway, this area is surrounded by range of amenities and facilities that make it ideal for corporate needs. BOLT offers a range of gaming options to kids, young enthusiasts and employees working in the nearby office complexes.It gives you access to everything you need and more.



LOCATION MAP



-  10 minutes from Botanical Garden Metro Station
-  30 minutes from upcoming Noida International Airport
-  An hour drive to Delhi Airport
-  Few minutes away from many prime locations of Central & South Delhi
-  Several MNC's like KPMG, Infosys, Samsung, Accenture, TCS, HCL in close proximity



Map is not-to-scale and is for graphical representation only

DELIVERED PROJECTS



Offering one of the largest roof top Water Body in India, Alphathum lays the ground for efficient and smart office spaces.



365 Office gets you ready for the future, where you control your time, where you mark your days, plan the year and drive your growth in the direction you want.



The I-THUM is a landmark development and the future of IT Parks in Noida, Sector 62. It offers Commercial Office Spaces and also shares the campus of the Corenthum including some leading banks.



City Center GZB, by Bhutani Group is one of the leading mall in ghaziabad with a multiplex, banquet, and a 3 Star Hotel, as its part.



World Square Hotel is a 3-star property in Ghaziabad that provides a comfortable stay and unmatched hospitality along with the easy access to the entertainment, shopping, and business hubs of the region.



Located at the pulse of Noida at Sector 62, Cyber Park offers a mix of open-plan environments, lockable and unlockable office spaces, shared offices. Cyber Pak gives a brilliant platform for entrepreneurs and professionals to interact, exchange ideas and share information

PARMESH COMPLEX, Nirman Vihar



PARMESH CORPORATE TOWER, Karkardooma



PARMESH COMPLEX I, Karkardooma



PARMESH COMPLEX II, Karkardooma

PARMESH BUSINESS CENTRE I: Karkardooma



PARMESH BUSINESS CENTRE II, Karkardooma

IIT ENGINEERS CO-OPERATIVE GROUP HOUSING SOCIETY, Dwarka



ON GOING PROJECTS



Part of a 26.8 acres mixed-use development, Cyberthum is one of the tallest commercial tower in NCR with world-class spaces, mall in the sky, and Bolt, one of India's biggest gaming and entertainment centers.



City Center 150 is a glimpse into the future of retail and lifestyle entertainment. With al-fresco style high-street retail in a low-rise development, the project is built to immerse visitors in a world of seamless convenience.



SECTOR - 62, NOIDA

Avenue 62 is a fusion of architectural form and art. It's elegantly supported by a welcoming waterfall at the entrance. The singular seamless perforated roof with its wraparound latticed skin and distinctive flowing lines gives it an organic texture that undulates with the land.



SECTOR - 133, NOIDA

Avenue 133 is a luxurious project meticulously crafted to set a new standard for the future of retail. Its modern, elegant, and balanced design is an absolute showstopper that promises to revolutionize the retail industry.



MARKETING OFFICE

PLOT NO - 1, SECTOR - 90, NOIDA
TEL : +91 120 490 90 90, UP
W : BHUTANIGROUP.COM

SITE OFFICE

PLOT NO - 5, SECTOR - 127, NOIDA
UTTAR PRADESH 201303
E : INFO@BHUTANIGROUP.COM

Disclaimer: This is not an offer. Investments are subject to market risks. Read the offer document carefully, before investing. The Pictures and details are tentative depictions only. Mentioned features are indicative and are subject to change without any prior notice as may be decided by the company or competent authority. Special Scheme by the developer. 1Sq Mtr = 10.764 Sq. Ft. IT Enfrservices Pvt. Ltd., its employees, agents and other representatives will not accept any liability suffered or incurred by any person arising out of or in connection with any reliance on the content of or intimation contained in this brochure. This limitation applies to any kind of losses or damages including but not limited to, compensatory, direct, indirect or consequential damages, loss or income or profit, loss of or damage to property and claims by third party.